

Are you an Inclusive Designer?



Gillian Burgis-Smith ND BA (hons) DipArch (hons) RIBA ARB RIAI

RIBA Core CPD Speaker 2023: Inclusive Environments

ARB Leesman AP.

www.StrawberryLeopardLtd.com



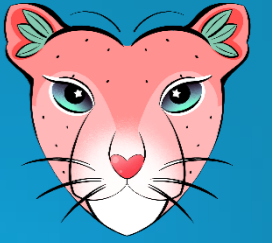
My story



IN A WORLD
 WHERE YOU
CAN BE ANYTHING
BE KIND.



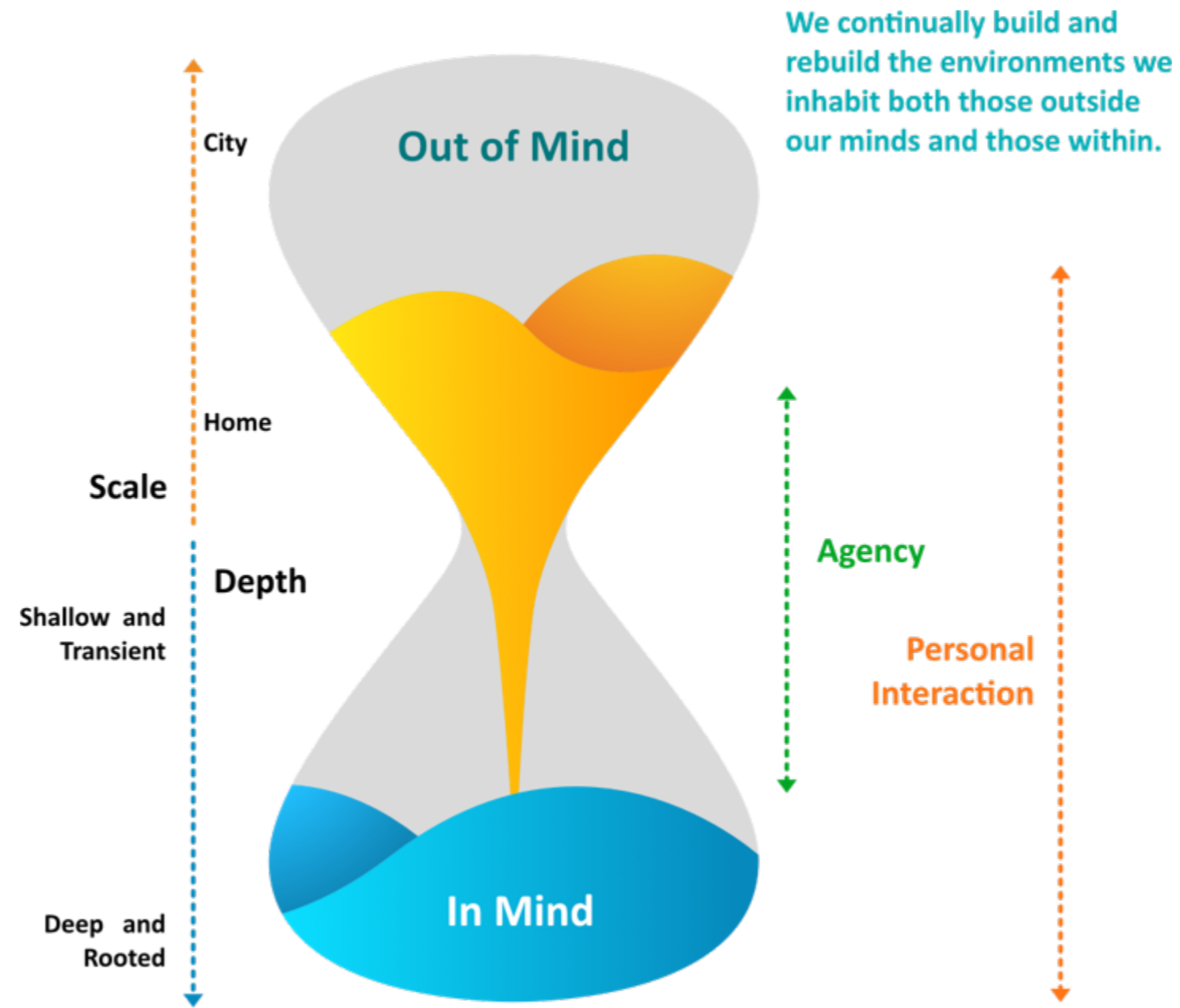
Fact 1



Everyone is different our brains are as unique as our fingerprints.

Lutz Jänke, Professor of Neuropsychology, Zurich 2018

Fact 2





Inclusive design



Universal design

(noun)

A design that works for everyone in all scenarios and with every contingency

Accessibility

(adjective)

An attribute; a quality that makes an experience open to all

Inclusive design

(verb)

A human-centered design process that embraces diversity

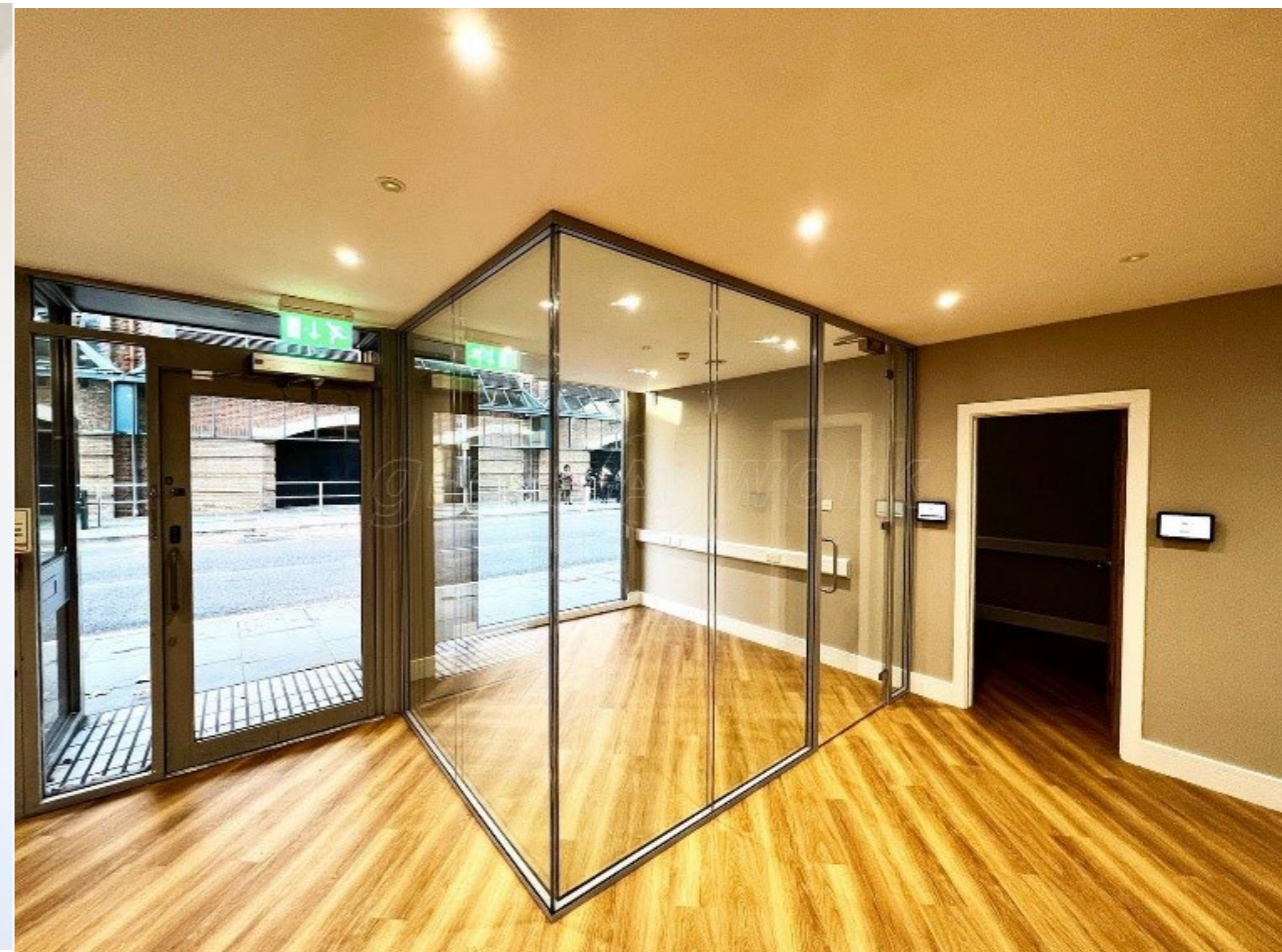


Transitional & Liminal Barriers to Entry and Agency



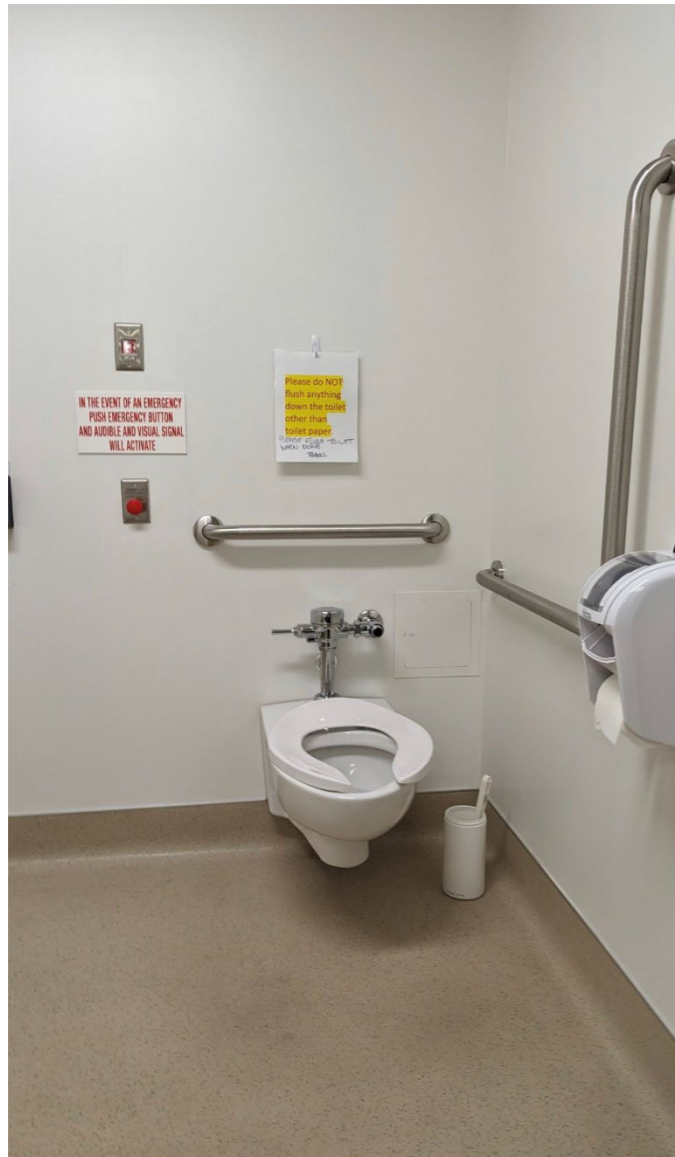


Transitional & Liminal Barriers to Entry and Agency 2





Physical barriers





Inclusive design benefits everyone



Touch



See



Hear



Speech



Cognitive

Permanent

One arm

Blind

Deaf

Non-verbal

ADHD/
concentration
challenges

Temporary

Arm injury

Cataract

Ear infection

Laryngitis

Fatigue/
depression

Situational

Carrying
something

Sun on screen

Noisy
surroundings

Heavy accent

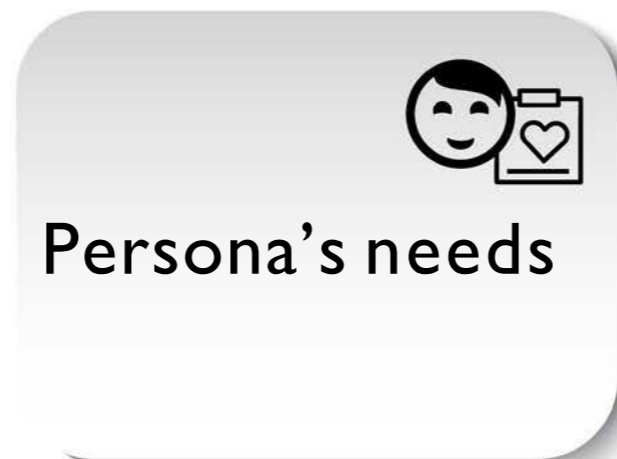
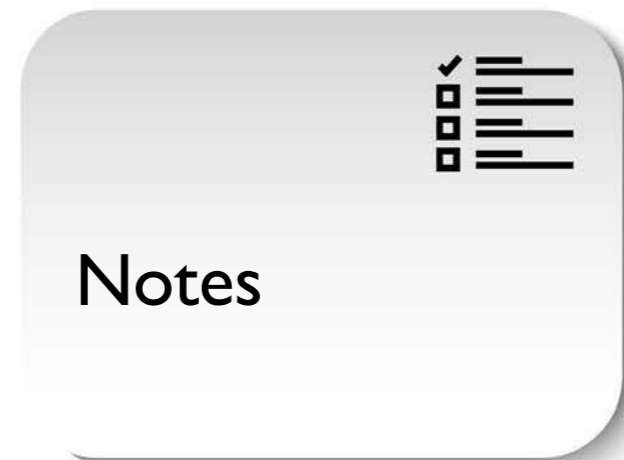
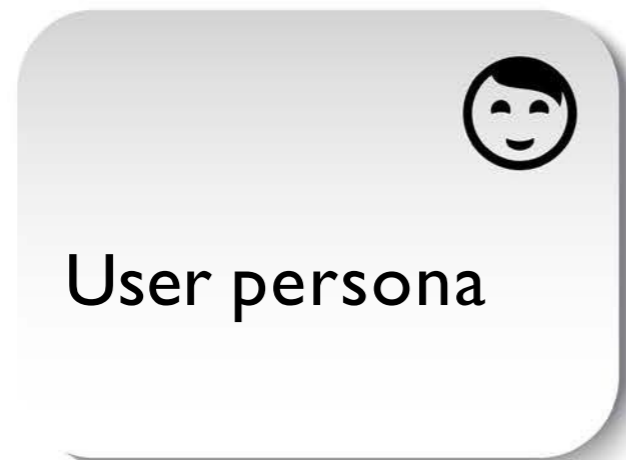
Office culture



Lessons learnt



IDEA Design Canvas



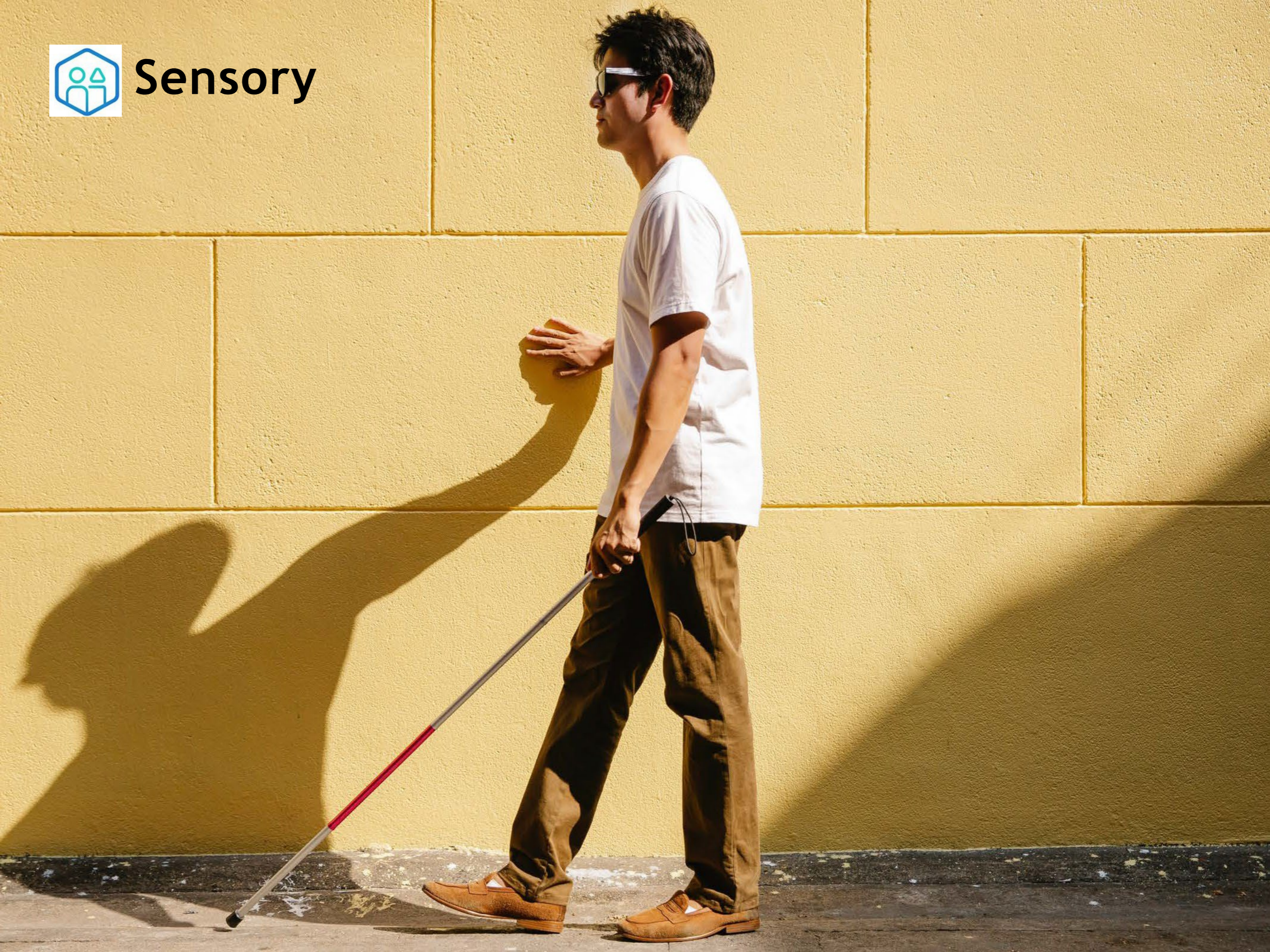


Physical





Sensory





Cognitive





Inclusive Design Canvas

User Persona Describe the user persona		Persona's journey Describe the persona's journey, considering key tasks and associated demands		Notes	
Persona's capabilities Are descriptors that influence the ability for a persona to perform tasks within a built environment		Persona's needs Are descriptors, given persona's capabilities, to perform tasks within a built environment		Design requirements Are descriptors of design actions required to ensure the built environment meets the persona's needs	
Physical capabilities Describe the persona's physical capabilities <i>E.g., mobility, stamina, agility, balance, etc.</i>		Physical needs Describe the persona's physical needs by focusing on the descriptors from the persona's journey and physical capabilities <i>E.g., "User needs to to achieve"</i>		Physical requirements Describe the key inputs for the design of the built environment by referring to the persona's journey, capabilities and needs <i>E.g., "Ensure the entrance is to include"</i>	
Sensory capabilities Describe the persona's sensory capabilities <i>E.g., vision, touch, smell, taste, hearing, vestibular, etc.</i>		Sensory needs Describe the persona's sensory needs by focusing on the descriptors from the persona's journey and sensory capabilities <i>E.g., "User needs to to achieve"</i>		Sensory requirements Describe the key inputs for the design of the built environment by referring to the persona's journey, capabilities and needs <i>E.g., "Ensure the room colors are to include"</i>	
Cognitive capabilities Describe the persona's cognitive capabilities <i>E.g., think, learn, understand, question, etc.</i>		Cognitive needs Describe the persona's cognitive needs by focusing on the descriptors from the persona's journey and cognitive capabilities <i>E.g., "User needs to to achieve"</i>		Cognitive requirements Describe the key inputs for the design of the built environment by referring to the persona's journey, capabilities and needs <i>E.g., "Ensure the space is to include"</i>	

The Inclusive Design Canvas is a strategic design template that offers an educational springboard for architectural design professionals to embed inclusive design in the design process.



Gift from us



IDEA Canvas to brainstorm user persona's

Some ideas:

Examine processes and practices.

Coaching and training for internal team members (create a culture of care, empathy and understanding)

Reach out to Inclusive consultants and champions including ERG's and affinity groups.

Consider the Hidden Disabilities sunflower lanyard scheme

Consider the IDEA canvas

Familiarise yourself with WELL Equity rating & PAS6463



Call to action



For neurodivergent and neurodegenerative individuals:
Learn how you work, play, live best. Be kind to yourself.
Learn to communicate to others how you work, play, live best

For all:

Be patient with others (and aware of unconscious bias)

Champion an inclusive environment

Respect and listen

Consider sensory issues and mapping to the environment

See through the lens of others, learn their language, we all present and process information differently

Collaborate for consistency in approach (use different methods of collaboration).

‘Nothing about us without us.’

Test and learn. Adjust if necessary.



Reframing design





Questions- Get in touch

gillian@strawberryleopardltd.com



Confidentiality & IP



Information attached is designated as confidential including information which relates to the business, properties, assets, trading practices, services, audits, know-how, personnel, and customers

The Supplier retains “Intellectual Property Rights” means patents, copyright and related rights, moral rights, trademarks and service marks, goodwill and the right to sue for passing off rights to use, and protect the confidentiality of, confidential information (including know-how and trade secrets) and all other intellectual property rights, in each case whether registered or unregistered

EXCEPT the Inclusive Design Canvas this is designated open source and it's use is encouraged as a co-creation tool for physical, cognitive and sensory design.